



(Deemed to be University)

*Where there is space for every dream*

# NMAM INSTITUTE OF TECHNOLOGY

Nitte - 574 110, Karkala Taluk, Udupi District, Karnataka, India



**39 Years**  
**Countless Smiles**

# Justice **K S Hegde**

Founder (1909 - 1990)



## **About the Management**

Nitte Education Trust was founded in 1979 by Late Justice K S Hegde, former Judge of the Supreme Court of India and Speaker of the Lok Sabha. Justice Hegde strongly believed that education is pivotal to the overall progress of a community and this vision led to the birth of Nitte Education Trust. His legacy is being continued by his son, Mr N Vinaya Hegde.

## **About Nitte University**

Nitte University has been consistently ranked among the top 100 Universities in India in the National Institutional Ranking Framework (NIRF) by the Ministry of Education, Gol and is accredited with A+ Grade by the National Assessment and Accreditation Council of India (NAAC). The University offers undergraduate, postgraduate and doctoral programs in a variety of disciplines. International affiliations, encouragement to academic research, a strong emphasis on sustainability and a healthy student connect are the hallmarks of this growing university.



# Hall of Fame



**NITTE**

(Deemed to be University)

NAAC  
ACCREDITATION  
A+ GRADE



**NITTE**

(Deemed to be University)

NIRF UNIVERSITY  
RANKINGS 2024  
66



**NITTE**

(Deemed to be University)

THE WORLD UNIVERSITY  
RANKINGS 2024  
1501+



**NITTE**

(Deemed to be University)

QS SOUTHERN ASIA  
RANKINGS 2024  
143



**NITTE**

(Deemed to be University)

THE IMPACT  
RANKINGS 2024  
301-400 BAND



**ABSMIDS**

NIRF DENTAL  
RANKINGS 2024  
6



**NGSMIPS**

NIRF PHARMACY  
RANKINGS 2024  
41



**NMIT**

NIRF ENGINEERING  
RANKINGS 2024  
101-150 BAND



**NMAMIT**

NIRF ENGINEERING  
RANKINGS 2024  
151-200 BAND



**NGSMIPS**

NBA  
ACCREDITED  
BPHARM



**NMAMIT**

NBA  
ACCREDITED  
UG PROGRAMS



**NMIT**

NBA  
ACCREDITED  
UG PROGRAMS

# NITTE MAHALINGA ADYANTHAYA MEMORIAL INSTITUTE OF TECHNOLOGY

Established in 1986.

Approved by the All India Council for  
Technical Education, New Delhi.

Constituent college of Nitte (Deemed  
to be University), Mangaluru.

Placed in the Rank band 151-200 in  
NIRF 2024.

Undergraduate programs accredited by  
the National Board of Accreditation  
(NBA), New Delhi under Tier-I category.

**Active  
Collaborations  
with**

- Pennsylvania State University, Harrisburg, USA
- Okayama University, Japan
- Université Paul Sabatier - Toulouse III, France
- University of Miyazaki, Japan
- University of Washington, USA
- University of Plymouth, UK
- University of Wollongong, Australia
- University of Illinois, USA
- Ritsumeikan University, Japan
- Kyushu Institute of Technology, Japan
- University of Alberta, Canada
- Kutztown University, USA
- Indiana University of Pennsylvania, USA
- Kyoto University of Advanced Science, Japan
- Charles Sturt University, Australia
- Asian Institute of Technology, Thailand
- Middle East Technical University, Turkey
- Serambi Mekkah University, Indonesia
- Virginia Common Wealth University, USA
- National Central University, Taiwan
- Millersville University, USA
- Worcester Polytechnic Institute, USA
- Istanbul Nisantasi University, Turkey



NMAMIT has over

**6300+ Students**

studying in a

**130 Acre**

campus each year.

The Institute is situated in a lively, peaceful campus in Nitte, amidst the Western Ghats of Southern India, en route to Kudremukh ranges. The closest airport is Mangaluru International Airport (45 km), and the nearby railway stations are Udupi (40 km) and Mangaluru (50 km).

# Principal



## Prof (Dr) Niranjan N Chiplunkar

Prof (Dr) Niranjan N Chiplunkar holds a doctorate in Computer Science & Engineering from the University of Mysore and has 36 years of teaching experience. He holds 2 Indian patents for "Novel 3D Architecture for Network on Chip System" and "Electromechanical System for Storing and Retrieving Footwear from Shoe Rack based on User's Iris Scan Features" and also an Australian patent for a "Low-cost approach for mask detection in surveillance video based on deep learning objects."

The complete list of teaching faculty is available at

[nitte.edu.in/nmamit](https://nitte.edu.in/nmamit)

ExperienceNitte  
ExperienceSuccess

**INR 53 Lakhs**  
Highest Package

**400+**  
Recruiters

**1000+**  
Job Offers/ Year

**90%**  
Students placed



# Collaboration with Japanese Organizations

**2013**

MoUs with the University of Miyazaki and Ritsumeikan University facilitated exchange of students / faculty, internship and higher studies in Japanese Universities.

**2019**

Nitte Sakura Science Forum launched.  
Training in Japanese language and culture provided on campus.

**2019**

Pre-placement internship offered to final year students in Japan.

**2022**

35 students placed in Japanese companies.

**2023**

24 students have secured positions in prestigious companies in Japan.

**2024**

28 students have been placed across 11 Japanese companies.





# Atal Incubation Centre (AIC) - Nitte



- Among the top 75 institutions in the country selected by NITI Aayog, GoI for setting up the Atal Incubation Centre under Atal Innovation Mission (AIM).
- Supports entrepreneurs by providing mentorship and access to investors.
- Supports start-ups in Agritech, Healthtech, Biotech and SaaS.
- Seed Fund upto Rs.400 lakhs to start-ups under Startup India Seed Fund Scheme.
- Supports existing Micro, Small & Medium Enterprises (MSME) in the region.

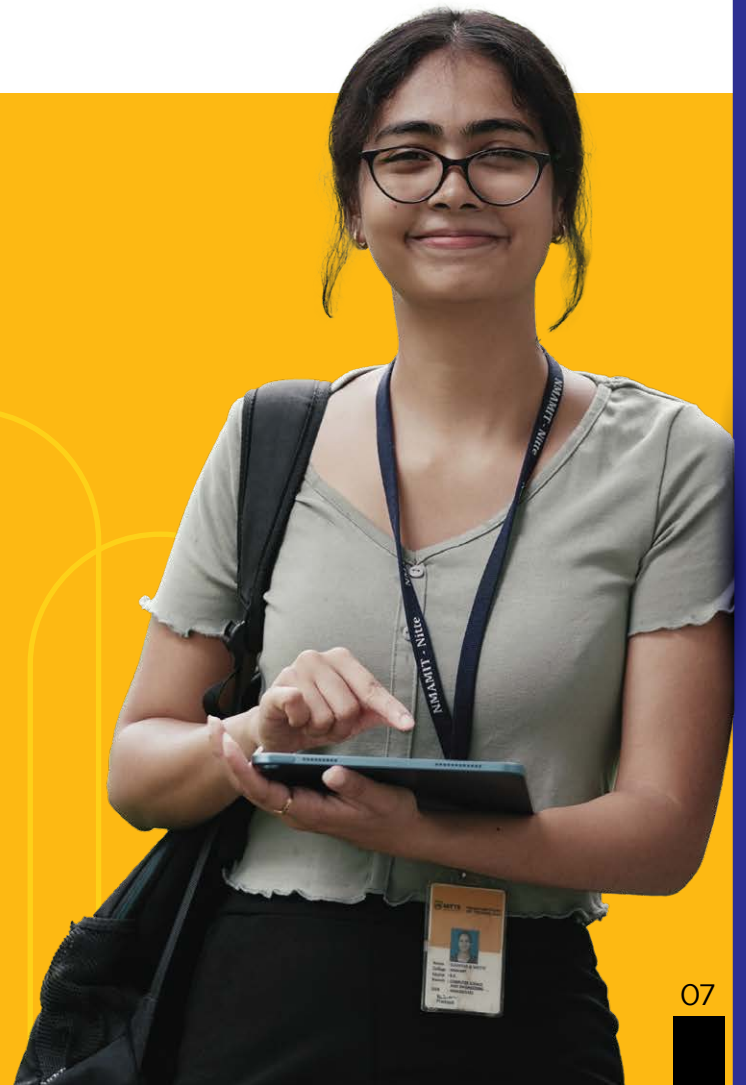
## Entrepreneurship Development Cell

The Department of Science & Technology (DST), GoI established the Entrepreneurship Development Cell (EDC) at NMAMIT to conduct training programs to promote the development of business ventures, small scale industries, micro enterprises and employment opportunities in the region. EDC also works towards creating an entrepreneurial culture in institutions in and around Nitte.

## New Age Incubation Network (NAIN)

NMAMIT was one among the 9 Engineering colleges selected by GoK for the **Karnataka New Age Incubation Network**.

Students work on their projects and bring them to the prototype level at NAIN.



Department of

# Counselling, Welfare, Training & Placement

The department envisions NMAMITians as joyful, healthy, socially and ecologically conscious individuals - ethical, collaborative, technically skilled, highly employable, and universal citizens.





## Activities include

- Fresher Orientation Programs (FOP)
- Programs to spot talent, encourage leadership and enhance self-esteem
- Assisting specific needs of students directly or by utilising peers, senior students, alumni, industry mentors, faculty, friends of NMAMIT, social media and library
- Therapeutic help for students
- Remedial programs for non-placed, non-IT students by faculty and placed students
- Employability Readiness Program
- Facilitating industrial training/internship for students
- Pooled campus drives to assist neighbouring colleges
- Preparation for higher studies and Armed Forces
- Student Development Activities & Clubs
- Orientation for students to help them belong, boost morale, seek help and work on deficient areas
- Preparation for placements - Crack the Campus (Aptitude, Technical Round, HR Interview, Group Discussions)
- Address by industry experts and alumni
- Soft Skills training to face the real world

## Centres of R&D

The Institute has various Centres of R&D with state-of-the-art facilities to actively encourage research & development.



## Research & Innovation Centre (RIC)



Research, innovation and product development activities are given prime importance at the institute. All postgraduate and undergraduate students are encouraged to participate in research, innovation, product development and publications, under the guidance of faculty mentors. Focused research on developing the next generation of power electronics interfaces for smart grids, power converters for electric vehicles and renewable energy utilization and solid-state transformers is being carried out.

The RIC also houses Centre for Tool-based Micromachining Research, Centre for System Design Fabrication and Testing, Centre for Research on Vibration Isolation and Centre for Design of Power Electronics Systems.

The Centre for Tool-based Micromachining Research has garnered five best research work awards at the International Machine Tool Exhibition (IMTEX) from 2014 to 2022. Additionally, it received "The M. S. Yoganarasimha Prize for Innovation in Design - 2023" from the Fluid Power Society of India. The Centre's research efforts have resulted in the filing and publication of several patents. Various Centres of Excellence have been established across different departments to foster research and innovation among faculty and students.

# Centres of Excellence

- Centre for Condition Monitoring and Advanced Machining
- Bioenergy Research Information & Demonstration Centre
- Centre for Welding Technology (in association with M/s Fronius India Private Limited)
- NIDEC Advance Technology Corporation
- Autoliv
- Kobayashi Create
- NLP and Speech Processing
- Automotive Learning Factory (Technical collaboration with Ashok Leyland)
- Texas Instruments
- Centre for High-Performance Computing
- Wipro 3D
- Centre for Basic Science Research



## RIC also provides internship in the following niche areas

Product Lifecycle Management

Hardware design and development

PCB design and assembly

Embedded software development for power electronic applications

IoT for power electronic applications and automation

Motor drive and control

# Programs

- Artificial Intelligence & Data Science
- Artificial Intelligence & Machine Learning
- Biotechnology
- Civil (Powered by L&T EduTech)
- Computer & Communication
- Computer Science
- Computer Science (Cyber Security)
- Electrical & Electronics
- Electronics & Communication
- Electronics & Communication (ACT)
- Electronics (VLSI Design & Technology)
- Information Science
- Mechanical (Powered by L&T EduTech)
- Robotics & Artificial Intelligence

## International Twinning / Dual Programs in Computer Science

Twinning/Dual Degree  
with PSU, USA

Dual Degree with  
UOW, Australia





## Artificial Intelligence & Data Science

Enables students to acquire technical skills to perform data processing, analysis and visualization for real-time applications. AI&DS studies encompass the application of mathematical concepts in data management, exploration of diverse data processing methods, and their industrial applications. The gained knowledge can be utilized in creating software systems that enable intelligent decision-making in business. This specialized field focuses on developing data-driven solutions, employing data visualization tools, and utilizing machine learning and deep learning for addressing computational and real-world challenges.



## Artificial Intelligence & Machine Learning

Pursuing a BTech in AI&ML provides a comprehensive education in cutting-edge technologies. Specialized subjects like machine learning, deep learning, and advanced technologies reflect current trends. The program includes a high-performance lab supported by industry leaders Intel and Dell, offering practical, hands-on experience. Graduates enjoy abundant job opportunities with renowned companies such as Microsoft, Amazon, Google, and others. The program prepares students for success in the dynamic field of Computer Science and Engineering, providing enhanced skills in AI&ML for a blend of academic and skill-based education.



## Biotechnology

The program focuses on applying engineering principles to biological applications, with an emphasis on developing bioproducts at both lab and industrial scales. The curriculum promotes practical and knowledge-based learning aligned with industry standards. It includes research and development in areas such as food, agriculture, medicine, and the environment. The department houses the Bioenergy Research, Information, and Demonstration Centre (BRIDC), funded by the Karnataka State Bioenergy Development Board, facilitating awareness and information dissemination about biofuels among the scientific community, students, farmers, and the public.





## Civil (Powered by L&T EduTech)

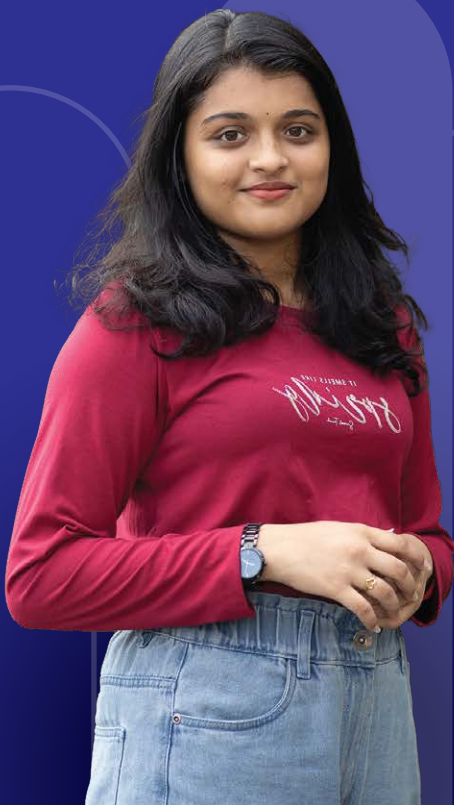
Our BTech in Civil Engineering is a collaborative effort with L&T EduTech, integrating industry expertise from the Larsen and Toubro group. This uniquely crafted program emphasises a specialised focus on 'Transportation Infrastructure Engineering' equipping students with comprehensive technical, functional, and behavioural skills for immediate industry readiness. The curriculum includes dynamic features such as periodic industry immersions, regular interactions with industry experts, and dedicated career support, providing students with exciting opportunities to excel in their professional journey. The program involves planning, analyzing, designing, and executing infrastructure using cost-effective non-conventional materials for construction, architecture, town planning, and smart city development. The profession encompasses designing and executing structural works for the public, such as dams, bridges, highways, and power plants. Additionally, it extends to constructing chemical process plants, nuclear power stations, and water desalination projects.

**L&T  
EduTech**



## Computer & Communication

This program specializes in Computer Communication Technologies and Telecommunications, focusing on Computer Networks and Telecommunications technologies. It covers Computer Science, Cloud Computing, Multimedia Communications, and Big Data Analytics. The goal is to equip students for research, integrating multi-disciplinary skills in designing modern computing devices with communication channels and advanced computer algorithms. The program provides experiential learning in computer science, communication networks, security, and related subjects. It is a professional degree that integrates communication techniques, problem-solving, simulation skills, and mathematical foundations for real-world problem-solving.



## Computer Science

Computer Science & Engineering provides fundamental knowledge of computer programming and networking. This program covers the implementation, design, and management of information systems in both hardware and software. It involves the theory of computation and the design and implementation of computational systems. The problem-solving and programming skills acquired can be applied to various fields, including medicine, energy, economics, and social issues.





## Computer Science (Cyber Security)

Cyber Security offers a lucrative career path for tech enthusiasts, with significant demand and growth projected. The U.S. Bureau of Labor Statistics anticipates a 31% increase in employment for information security analysts from 2019 to 2029. India faces a shortage of approximately 1 million Cyber Security professionals, according to the Data Security Council of India.

NMAMIT, provides a BTech program that combines core Computer Science and Engineering subjects with specialized Cyber Security topics. The curriculum covers Cyber Security & Forensics, Cloud Security, IoT Security, Ethical Hacking, Network Defense, Security Analytics, Firewall & UTM Architecture, Malware Analysis, Detection, Resilience Analysis, and applying Artificial Intelligence & Machine Learning in Cyber Security. Students gain practical knowledge in both areas, allowing them to pursue careers as general Software Engineers or Cyber Security professionals. Certification in Cyber Security and Analysis opens doors to opportunities with top global organizations, as the demand for skilled professionals in IT and Cyber Security remains high.



## Electrical & Electronics

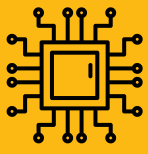
Electrical & Electronics Engineering deals with the study, analysis and application of electricity, electronics and electromagnetism. With the emphasis on energy production from renewable resources, power electronics has emerged as a very fertile area for research and development.



## Electronics & Communication

The program intends to enhance students' understanding and skills in fundamental concepts and theories relevant to their professional roles. This includes analysis, systems implementation, operation, production, and maintenance of applications in Electronics & Communications Engineering. Serving as a crucial component for various consumer applications, the field has applications in Satellite and Mobile Communication, Analog and mixed-mode VLSI design, Automation with scripting, Biomedical instrumentation, Artificial Intelligence, and IoT.





# Electronics & Communication (ACT)

BTech in Electronics & Communication (Advanced Communication Technology) is an AICTE approved program focusing on 'Skilling India in NXTGEN Telecom Technologies'. This program is a specialization in Electronics & Communication Engineering with an emphasis on Data Communication and Telecommunication technologies. It aims to equip students with expertise in Device-to-Device Communication and Next-Gen Telecommunication standards. The main focus of the EC (ACT) program is on Communication Networks, Embedded Systems, Digital Signal Processing, 5G, WiFi 6, IoT, Network Security, Information Technology and Advanced Communication Technologies. The program also covers foundation subjects in Computer Science, Programming and Application development. The program emphasizes developing practical skills and in-depth knowledge essential for today's industries.



# Electronics (VLSI Design & Technology)

The Electronics Engineering specialization in VLSI Design & Technology within the BTech in Electronics & Communication Engineering program aims to prepare engineers for roles in the electronics and semiconductor industries. VLSI, focusing on the design and manufacturing of Integrated Circuits (IC) or silicon chips, is a central aspect of the program. The curriculum covers semiconductor devices, IC technology, VLSI circuits and design processes, semiconductor manufacturing and process technologies, assembly and packaging technologies, as well as microcontrollers and embedded systems. Additionally, students explore Electronic Design Automation (EDA) tools for semi-custom and full-custom design, along with programming and scripting languages for synthesis, simulation, verification, and testing.





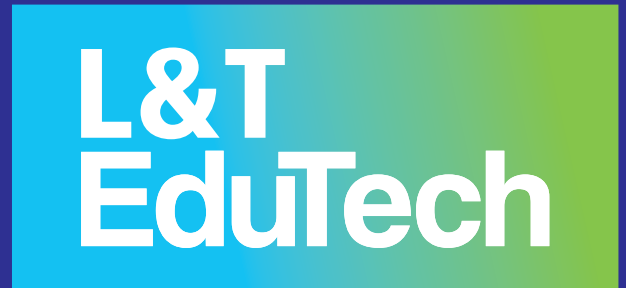
## Information Science

Information Science & Engineering offers comprehensive education, preparing students for the challenges and opportunities of the digital era. Students in this field cover diverse topics such as data management, networking, software development, artificial intelligence, machine learning, and information systems design. ISE provides a versatile foundation, enabling students to adapt to various roles in the dynamic technology landscape. Graduates can pursue careers in software development, data science, cybersecurity, and more. The program encourages critical thinking, problem-solving, and the development of innovative technologies shaping the future. Graduates may also become entrepreneurs, establishing companies to address societal problems. Information Science & Engineering offers comprehensive education, preparing students for the challenges and opportunities of the digital era.



## Mechanical (Powered by L&T EduTech)

The Mechanical Engineering program, developed in collaboration with L&T EduTech, offers a distinctive emphasis on 'Digital Manufacturing', harnessing the industry expertise of the Larsen and Toubro group. Tailored to ensure graduates are industry-ready, this program integrates a specialized curriculum that encompasses technical, functional, and behavioral skills. Key components include immersive industry experiences, ongoing engagement with industry professionals, and dedicated career guidance, presenting students with a wealth of opportunities to thrive in their chosen careers. Mechanical Engineering blends physics, mathematics, and materials science to design, analyze, and maintain mechanical systems. Graduates can excel in fields such as automotive design, energy systems, aerospace engineering, and manufacturing, empowering them to make significant contributions to cutting-edge industries and emerging technologies. Recognized as a foundational engineering discipline, Mechanical Engineering continues to contribute to the ongoing growth and development of the physical world.



## Robotics & Artificial Intelligence

The program cultivates innovation and critical thinking, providing students with the skills needed in the dynamic fields of Robotics & Artificial Intelligence. The curriculum, starting with foundational courses like Introduction to Robotics and Design of Robotic Components, progresses to advanced topics such as Smart Mobile Robots and Motion Control using PLC. Practical sessions and specialized labs, including the Robot Programming and Simulation Lab, complement theoretical knowledge, allowing students to bring designs to life. The program integrates AI with courses like Artificial Intelligence & Machine Learning and Neural Network & Deep Learning, offering insights into intelligent system design. Exploring future trends, courses on Autonomous Vehicle and Micro Aerial Vehicle prepare students for the next generation of robotic transportation. Industry 4.0 & IoT ensures graduates are ready for the evolving landscape of interconnected and smart industry applications in Robotics & Artificial Intelligence.



# Admission Procedure

## Eligibility

Pass in Class 12 or equivalent examination with not less than 50% marks as an aggregate in the optional subjects of Physics, Mathematics and Chemistry/Biotechnology/Biology/Computer Science/Electronics/Information Technology, with English as one of the languages of study. The candidate should have completed 17 years of age as on 31<sup>st</sup> December of the year of admission.



# The University admits candidates under the following categories

General

NRI



## Admission Under General Category

Candidates who are Indian Nationals and have studied Class 11 & 12 in India, fall under General Category. Admission to Engineering program under General Category is based on merit in the All India Entrance Test - NUCAT (Nitte University Common Admission Test).

Aspirants for NUCAT will have to complete and submit the Online NUCAT registration form available at [apply.nitte.edu.in](https://apply.nitte.edu.in)

## NUCAT Scholarship Category

**20%** of the seats in premier branches are set aside under this category, for toppers in NUCAT 2025.

Continuation of Scholarship beyond the first year is subject to maintaining code of conduct of the University and clearing the semester exams in single attempt.

## Admission Under NRI Category

The following are eligible for admission under NRI category based on marks secured in the optional subjects of Physics, Chemistry & Mathematics in Class 12 examination. Seats will be offered on the basis of inter-se merit.

- Candidates who are Foreign Nationals / PIOs / Overseas Citizens of India.
- Candidates who have passed Class 11 or 12 outside India.
- Candidates who have passed Class 12 in India, but are sponsored by parents / blood relatives having NRI status. Necessary documents should be produced in support of this claim.

Candidates seeking admission to the BTech program under NRI category are required to submit the Application form available on [apply.nitte.edu.in](https://apply.nitte.edu.in). On receipt of the same, the Admission Section will guide the students with the process of registration and admission.

# Fee Structure

Fee structure for Scholarship, General & NRI categories are available on [nitte.edu.in](http://nitte.edu.in) under 'Program Fee'.

## Documents required for admission

- NUCAT Rank Card (for General category students only)
- Class 10 Marks Card (Original + 2 attested copies)
- Class 12 or equivalent Marks Card (Original + 2 attested copies)
- Transfer Certificate from the institution last attended (Original + 2 attested copies)
- Conduct Certificate from the institution last attended
- Migration Certificate from the Board of the institution last studied (for non PUE Board students)
- Physical Fitness Certificate from a registered medical practitioner
- Blood Group Certificate
- Aadhaar card copy of the student
- Photographs: Recent colour photo with white background, resolution 300-600 dpi Passport size 5 Nos. (35mm x 45mm) & Stamp size 5 Nos. (20mm x 25mm)

## Additional documents for NRIs

- Valid Passport & Visa of parent/sponsor
- Residence Proof of parent/sponsor
- Employment Certificate of parent/sponsor
- Sponsorship Certificate (notarized)
- Relationship Certificate (notarized)
- Fee payment shall be in foreign currency/INR from NRE account of sponsor

## Commencement of Classes

The program commences on the date prescribed by the University, generally in August.



# International Twinning/Dual Degree at PSU, USA



**PennState**  
Harrisburg

## BTech Program in Computer Science Engineering

Nitte University, in collaboration with Penn State University, Harrisburg (USA) is offering the options of a Twinning / Dual Degree program in BTech (Computer Science Engineering) at Nitte Mahalinga Adyanthaya Memorial Institute of Technology (NMAMIT), with the approval of AICTE.

Penn State University at Harrisburg (PSU) is one of the constituent campuses of the Pennsylvania State University. PSU is a public state-related land-grant research university with campuses and facilities throughout the State of Pennsylvania, USA offering a variety of undergraduate, graduate and doctoral programs. It is ranked 89<sup>th</sup> in the QS World University Rankings of 2025.

## Dual Degree Program

The Dual Degree Program is structured on a 2+2 model with students completing the 1<sup>st</sup> & 2<sup>nd</sup> year requirements at NitteDU and the 3<sup>rd</sup> & 4<sup>th</sup> year requirements at Penn State University, Harrisburg. The credits earned at NitteDU are recognized by PSU, Harrisburg and credits earned at PSU are recognized by NitteDU. On successful completion of requirements, students earn a degree from the Penn State University as well as from NitteDU simultaneously.



# Twinning Program

The Twinning program is structured on a 2+1+1 model with students completing the 3<sup>rd</sup> year requirements at Penn State University, Harrisburg. The credits earned at PSU, Harrisburg are recognized towards the degree requirements, through a bipartite agreement between Nitte DU and PSU. Students who complete the program successfully, will receive BTech in Computer Science Engineering from Nitte (Deemed to be University).

Both the Dual and Twinning programs enable students to experience an international learning environment, train in advanced laboratories and enhance their cultural competence. The program also offers opportunities for networking that can be valuable for future career growth.

## Eligibility

Pass in Class 12 or equivalent examination with not less than 60% marks as an aggregate in the optional subjects of Physics, Mathematics and Chemistry/Biotechnology/Biology/Computer Science/Electronics/Information Technology, with English as one of the languages of study. The candidate should have completed 17 years of age as on 31<sup>st</sup> December of the year of admission.



## Program requirements

NitteDU students participating in the Dual/Twinning program will be subject to the academic regulations and performance standards of Penn State and will take the regular examinations. To be accepted into the semesters of study at PSU, students must have earned a minimum of 80 credits by the end of the second year at Nitte with a cumulative grade point average (CGPA) of 6.25 (NitteDU grading scale) equivalent to 2.5 (Penn State University grading scale).

## Application and selection process

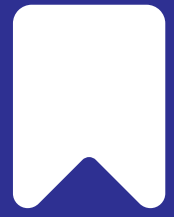
Interested candidates may submit the application at

[apply.nitte.edu.in](https://apply.nitte.edu.in)

Selection will be based on the basis of academic merit.



# International Dual Degree at UOW, Australia



UNIVERSITY  
OF WOLLONGONG  
AUSTRALIA

## BTech Program in Computer Science Engineering/Computer & Autonomous Systems

Nitte (Deemed to be University) offers Dual Degree Program in collaboration with the University of Wollongong (UOW), Australia for students of BTech in Computer Science Engineering at Nitte Mahalinga Adyanthaya Memorial Institute of Technology (NMAMIT), Nitte with the approval of AICTE.

University of Wollongong, Australia is an Australian public research university located in the coastal city of Wollongong, New South Wales approximately 80 kilometres south of Sydney. It offers a variety of undergraduate, graduate and doctoral programs and is ranked 167<sup>th</sup> in QS World University Rankings 2025.

The Dual Degree Program is structured on a 2+2 model with students completing the 1<sup>st</sup> & 2<sup>nd</sup> year requirements at NitteDU and the 3<sup>rd</sup> & 4<sup>th</sup> year requirements at University of Wollongong, Australia. The credits earned at NitteDU are recognized by UOW, Australia and credits earned at UOW are recognized by NitteDU. On successful completion of requirements, students earn a degree from the University of Wollongong as well as from NitteDU simultaneously.



# Eligibility requirements

Pass in Class 12 or equivalent examination with not less than 60% marks as an aggregate in the optional subjects of Physics, Mathematics and Chemistry/Biotechnology/Biology/Computer Science/Electronics/Information Technology, with English as one of the languages of study. The candidate should have completed 17 years of age as on 31<sup>st</sup> December of the year of admission.

# Program requirements

- NitteDU students participating in the Dual program will be subject to the academic regulations and performance standards of UOW and will take the regular examinations.
- To be accepted into the semesters of study at UOW, students must have earned a minimum of 80 credits by the end of the second year at Nitte with a cumulative grade point average (CGPA) of 7 (Nitte DU Grading Scale).
- Students can meet the eligibility requirements for Scholarship as per the norms of UOW up to AUD 10,000 per annum.

# Application and selection process

Interested candidates may submit the application at

[apply.nitte.edu.in](https://apply.nitte.edu.in)

Selection will be based on the basis of academic merit.





# BTech Lateral Entry

## Admission Procedure

### Eligibility

Pass in Diploma in any branch of Engineering & Technology with not less than 50% marks. Admission to BTech Lateral entry program is based on merit in the Diploma examination. Candidates seeking admission to the BTech Lateral Entry program are required to submit the Application form available on [apply.nitte.edu.in](http://apply.nitte.edu.in). On receipt of the same, the Admission Section will guide the students with the process of registration and admission.

### Fee Structure

Fee structure is available on [nitte.edu.in](http://nitte.edu.in) under 'Program Fee'.

### Documents required for admission

- Class 10 Marks Card (Original + 2 attested copies)
- Diploma Marks Cards of all years (Original + 2 attested copies)
- Diploma Certificate (Original + 2 attested copies)
- Transfer Certificate from the institution last attended (Original + 2 attested copies)
- Conduct Certificate from the institution last attended (Original)
- Migration Certificate from the Board of the institution last studied (Original)
- Physical Fitness Certificate from a registered medical practitioner (Original)
- Blood Group Certificate (Original)
- Aadhaar card copy of the student
- Photographs: Recent colour photo with white background, resolution 300-600 dpi  
Passport size 5 Nos. (35mm x 45mm) & Stamp size 5 Nos. (20mm x 25mm)

### Commencement of Classes

The program commences on the date prescribed by the University, generally in July / August.



# MTech

## Specializations

- Computer Science & Engineering
- Construction Technology
- Cyber Security
- Electric Vehicle Technology
- Mechatronics
- Structural Engineering
- VLSI Design & Embedded Systems

## Eligibility

Bachelor's Degree in Engineering / Technology or equivalent in the relevant field from any recognized University, with minimum of 50% marks in the qualifying examination. Candidates seeking admission to the MTech program are required to submit the Application form available on [apply.nitte.edu.in](https://apply.nitte.edu.in). On receipt of the same, the Admission Section will guide the students with the process of registration and admission.

## Fee Structure

Fee structure is available on [nitte.edu.in](https://nitte.edu.in) under 'Program Fee'.

## Documents required for admission

- Class 10 Marks Card (Original + 2 attested copies)
- Degree Marks Cards of all years (Original + 2 attested copies)
- Degree Certificate/Provisional Degree Certificate (Original + 2 attested copies)
- Transfer Certificate from the institution last attended (Original + 2 attested copies)
- Conduct Certificate from the institution last attended
- Migration Certificate from the University of the institution last studied (Original)
- Physical Fitness Certificate from a registered medical practitioner
- Blood Group Certificate
- Aadhaar card copy of the student
- Photographs: Recent colour photo with white background, resolution 300-600 dpi  
Passport size 5 Nos. (35mm x 45mm) & Stamp size 5 Nos. (20mm x 25mm)

## Commencement of Classes

The program commences on the date prescribed by the University, generally in August/September.



# MCA

## Eligibility

Candidates who have passed BCA/BSc (IT)/BSc (Computer Science) or BCom/BA with Mathematics at 10+2 level or at graduation level with minimum of 50% marks in aggregate in the qualifying examination. In addition, candidates will have to qualify in the All India Entrance Test – NUCAT (Nitte University Common Admission Test). Aspirants for the Entrance Test will have to complete and submit the Online NUCAT registration form available at [apply.nitte.edu.in](http://apply.nitte.edu.in)

## Fee Structure

Fee structure is available on [nitte.edu.in](http://nitte.edu.in) under 'Program Fee'.

## Documents required for admission

- NUCAT Rank Card
- Class 10 Marks Card (Original + 2 attested copies)
- Degree Marks Cards of all years (Original + 2 attested copies)
- Degree Certificate/Provisional Degree Certificate (Original + 2 attested copies)
- Transfer Certificate from the institution last attended (Original + 2 attested copies)
- Conduct Certificate from the institution last attended
- Migration Certificate from the University of the institution last studied (Original)
- Physical Fitness Certificate from a registered medical practitioner
- Blood Group Certificate
- Aadhaar card copy of the student
- Photographs: Recent colour photo with white background, resolution 300-600 dpi  
Passport size 5 Nos. (35mm x 45mm) & Stamp size 5 Nos. (20mm x 25mm)

## Commencement of Classes

The program commences on the date prescribed by the University, generally in August/September.

# PhD

Biotechnology  
Civil  
Computer Science  
Mechanical  
Electronics & Communication  
Electrical & Electronics  
Physics  
Chemistry  
Mathematics





# Facilities

Library

Conveyance

Cafeteria

Medicare

Wi-Fi

6 (Kar) Naval Subunit, NCC

Student Clubs

Hostels

Sports



## Library

The Library and Information Centre operates as a fully automated system, boasting a vast collection of 87,800 volumes and 39,300 titles in a 13,000 sq. ft. space. With subscriptions to 260 journals (national and international) and access to online services via VTU e-Resources Consortium, the library offers Wi-Fi and subscribes to over 47,000 e-resources, including e-journals, e-books, and databases from notable publishers like IEEE, Springer, Science Direct, EBSCO, ProQuest, Taylor & Francis, and more. The facility provides remote access to these resources and is open from 8 a.m. to 11 p.m. Experienced staff ensure timely information dissemination and user assistance.



## Conveyance

A fleet of 33 buses for students and staff from Karkala, Mangaluru, Udupi, Kundapur, Bantwal and Belthangady.



## Cafeteria

From sizzling non-vegetarian delicacies to wholesome vegetarian spread, our cafeteria is a culinary haven that brings together flavours from every corner. It's not just a place to refuel; it's a social hub where students gather, friendships are forged, and ideas simmer over a plate of delectable goodness.



## Medicare

Our campus clinic is equipped with an ambulance and a full-time doctor, ensuring prompt and reliable healthcare services for our students. Students can also visit the nearby Nitte Gajria Speciality Hospital, which is known for its excellent specialized medical care, giving them more healthcare choices.







## Wi-Fi

The campus, along with the hostels, is linked by a 1 Gbps BSNL leased line for internet connectivity, supplemented by a 500 Mbps Jio connection.



## 6 (Kar) Naval Subunit, NCC

The Naval Subunit NCC, operating under the 6 (Kar) Naval Unit in Udupi, annually admits 17 cadets. These cadets undergo training in various areas, including Seamanship, Health and Hygiene, Service Subjects, Semaphore, Drill, Boat pulling and Sailing, Ship modeling, Firing, and Social activities. Notably, the subunit's cadets have accomplished participation in National Camps such as AINSC, AIYR, RDC, IDSSC-IGC, Sea Attachment Camp, and Overseas Ship Deployment to foreign countries, including Mauritius, Madagascar, and Seychelles.



## Student Clubs

Under Abhyuday - The Department of Counselling, Student Welfare, Training & Placement, thirteen distinct student clubs cater to specific interests. These clubs serve as platforms for students to showcase their talents and build networks. The clubs include Annadana, Aura, Authorcraft, Clicz, Crack the Campus, Grey Matter, Kalanjali, Stereo, Taaleem, Aero, Robotics, Aisiri, Kalasangama, Samvaada, Tudar Siri, Shipwright, HackerEarth Hub, Soft Skills and Communication Association (SACA), Rachana, and Yuj for Life.



## Hostels

The college provides safe, secure, clean, and well-furnished hostels with hygienic vegetarian & non-vegetarian food. Recreation facilities include indoor and outdoor games. A resident warden is available to ensure that students are safe. The hostel has zero tolerance towards ragging, use of tobacco and drug abuse. Security personnel are placed round-the-clock in all the hostels.



## Sports

The BC Alva Sports Complex encompasses a 14,000 sq.ft Indoor Stadium featuring three badminton courts and one basketball court. Additionally, the complex offers facilities for table tennis, carrom, and chess.

For fitness enthusiasts, there is a multi-gymnasium and individual exercise stations catering to weightlifting and powerlifting. Athletes have access to a separate fitness centre. The complex boasts of standard 400-meter athletic turf track, facilities for various throws, and a pavilion equipped with a fitness centre.

Outdoor sports are well-supported with dedicated grounds for football, hockey, and cricket. There are three cricket pitches made of cement and clay for practice. Furthermore, the complex provides courts for volleyball, throwball, basketball, handball, and netball.



# Here's what our students have to say

**Student Name:** Adithi Bhakta  
**Company Placed:** Nutanix  
**Branch:** Information Science



Choosing NMAMIT was one of my life's best decisions. The institution offers an outstanding academic environment, cutting-edge facilities, and highly committed and knowledgeable faculty. The opportunities for personal and professional growth are unparalleled, and I am grateful for the experiences that have shaped me. Special thanks to Abhyuday, our Placement Department, whose hard work not only opened doors to promising careers but also positioned us for success in top-notch companies.

**Student Name:** Vishaka Pai K  
**Company Placed:** Samsung Semiconductor India Research (SSIR)  
**Branch:** Electronics & Communication



Reflecting on my transformative four years at NMAMIT fills me with gratitude. I am proud to be part of this institution, where every corner holds cherished memories. In vibrant classrooms and an engaging learning atmosphere, my time wasn't just about studies; it was an open canvas for creating well-rounded memories. NMAMIT became a second home, and its people, my second family. Experiences, both inside and outside the classrooms, crafted moments I'll always cherish. The transition into the professional realm was pivotal, and the Placement Department guided me through the tumultuous sea of career choices. With unwavering support, they transformed aspirations into achievements, playing a crucial role in shaping our career paths from resume workshops to mock interviews, ensuring we were well-prepared for the corporate world. Thank you for being the catalyst that turns dreams into reality.

**Student Name:** Harshith S Devadiga

**Company Placed:** Amagi

**Branch:** Computer Science



I cherish my college memories, as my time at NMAMIT was overwhelmingly positive. Looking back on the past four years, the college played a crucial role in molding me into a proficient engineer and offered excellent placement opportunities. I attribute my successful placement at Amagi to the dedicated efforts and support of my lecturers and our placement department.

**Student Name:** Jessica Fernandes

**Company Placed:** Mercedes-Benz Research and Development India

**Branch:** Electronics & Communication



NMAMIT has been a transformative experience for me, contributing significantly to my overall growth. The vibrant campus community and diverse extracurricular opportunities enriched my journey. The institution laid the foundation for my successful engineering career, providing invaluable lessons and experiences. The exceptional college placement support seamlessly guided my transition from academics to the professional realm. The placement department's industry connections played a crucial role in securing interviews with top-tier companies, facilitating a smooth transition to the corporate world. Securing a position aligned with my aspirations is a testament to the effectiveness of the placement process.

**Student Name:** Sagar Amin

**Company Placed:** Lam Research

**Branch:** Electrical & Electronics



Studying at NMAMIT has been a highly enriching experience, prioritizing holistic development. The curriculum not only emphasizes theoretical aspects but also places a significant focus on practical applications through projects, industrial training, and extracurricular activities, ensuring students are industry-ready. The highly qualified and approachable faculty enhances the engaging teaching-learning process. The valuable training from the placement department played a pivotal role in my successful placement. In summary, NMAMIT has contributed significantly to my all-around growth and development, transforming me into a better individual.

**Student Name:** Navinya S Acharya

**Company Placed:** Prism Johnson Limited

**Branch:** Civil



It has been a wonderful opportunity that I got placed in Prism Johnson Limited. I have been working for the past 7 months and my work is going very well. I am very thankful to our placement department and my placement coordinators for their guidance during placements.

**Student Name:** Chiraksha Shetty

**Company Placed:** ACT Fibernet

**Branch:** Computer Science



My time at NMAMIT has been thrilling, marked by diverse interactions and shared engineering insights. The constant support, flexible curriculum, and approachable faculty at NMAMIT have been instrumental in shaping my career. Engaging in sports, cultural activities, workshops, and volunteering enriched my experience, fostering not only academic but also personal growth. The vibrant campus culture provided ample opportunities for collaboration. The placement training, with ongoing support from the placement and computer science departments, played a crucial role in securing my position as a Management Trainee at ACT Fibernet. I am immensely grateful for this valuable opportunity and support.

**Student Name:** Swaraj S Shetty

**Company Placed:** Juniper Networks

**Branch:** Electrical & Electronics



My placement experience at NMAMIT was excellent. The placement department offered comprehensive training in aptitude questions, interview preparation, and group discussions. The pre-placement training proved extremely beneficial even before the actual placement process began. The seamless coordination between the placement department and the branch placement coordinator was instrumental in guiding me through the interview process and ultimately securing a placement.

# Programs at Nitte

COLLEGES	PROGRAMS OFFERED
<b>NMAM Institute of Technology (Nitte)</b>	BTech: Artificial Intelligence & Data Science   Artificial Intelligence & Machine Learning   Biotechnology   Civil   Computer & Communication   Computer Science   Computer Science (Cyber Security)   Electrical & Electronics   Electronics & Communication   Electronics & Communication (Advanced Communication Technology)   Electronics (VLSI Design & Technology)   Information Science   Mechanical   Robotics & Artificial Intelligence   MTech   MCA   PhD
<b>Nitte Meenakshi Institute of Technology (Bengaluru)</b>	BTech: Artificial Intelligence & Data Science   Artificial Intelligence & Machine Learning   Aeronautical   Civil   Computer Science   Computer Science & Business Systems   Electrical & Electronics   Electronics & Communication   Electronics (VLSI Design & Technology)   Information Science   Mechanical   MTech   MCA   MBA   PhD
<b>K S Hegde Medical Academy (Mangaluru)</b>	MBBS   MD.MS   MCh   PhD MPH (Public Health)   MHA (Hospital Admn) Fellowship: Interventional Pulmonology   Neuroimmunology PG Diploma: Computed Tomography Technology   MRI Technology MSc: Clinical Embryology BSc & MSc: Anaesthesia & OT Technology   Medical Imaging Technology   Medical Lab Technology   Respiratory Therapy BSc: Renal Dialysis Technology   Radiation Therapy Technology
<b>A B Shetty Memorial Institute of Dental Sciences (Mangaluru)</b>	BDS   MDS   Fellowship in Oral Implantology   PhD
<b>NGSM Institute of Pharmaceutical Sciences (Mangaluru)</b>	DPharm   BPharm   PharmD   PharmD (PB)   MPharm   PhD
<b>Nitte College of Pharmaceutical Sciences (Bengaluru)</b>	BPharm   MPharm

<b>Nitte Usha Institute of Nursing Sciences (Mangaluru)</b>	GNM   PB BSc Nursing   BSc Nursing   MSc Nursing   PhD
<b>Nitte Institute of Physiotherapy (Mangaluru)</b>	BPT   MPT   PhD
<b>Nitte Institute of Speech &amp; Hearing (Mangaluru)</b>	B.ASLP (Audiology & Speech-Language Pathology) MSc: Speech-Language Pathology   Audiology   PhD
<b>Nitte University Centre for Science Education &amp; Research (Mangaluru)</b>	BSc (Honors) Biomedical Science MSc by Research MSc: Biomedical Science   Cancer Biology   Food Safety & Biotechnology   Microbiology   Biotechnology   Marine Biotechnology   PhD
<b>Nitte Institute of Architecture (Mangaluru)</b>	BArch
<b>Nitte School of Architecture, Planning &amp; Design (Bengaluru)</b>	BArch   BPlan   BDes   MPlan
<b>Nitte Institute of Communication (Mangaluru)</b>	BA (Honors) Media & Communication   PhD
<b>Nitte Institute of Hospitality Services (Mangaluru)</b>	BSc (Honors): Hotel Management   Culinary Arts & Management   Airlines, Tourism & Hospitality
<b>Justice K S Hegde Institute of Management (Nitte)</b>	MBA   PhD
<b>Nitte School of Management (Bengaluru)</b>	PG Diploma in Management

<p><b>Nitte School of Fashion Technology &amp; Interior Design (Bengaluru)</b></p>	<p>Diploma: Fashion Design   Interior Design BDes: Fashion Design   Interior Design MDes: Fashion Design   Interior Design</p>
<p><b>Dr NSAM First Grade College (Nitte)</b></p>	<p>BCA   BSc (Data Analytics)   BCom (General   Professional) BBA (General   Business Analytics   Logistics &amp; Supply Chain Management)   PhD</p>
<p><b>Nitte Institute of Professional Education (Mangaluru)</b></p>	<p>BCA (Artificial Intelligence &amp; Machine Learning   Cyber Security &amp; Digital Forensics   Cloud Technology &amp; DevOps) BBA (Business Analytics   International Business   Banking, Financial Services &amp; Insurance)</p>
<p><b>Dr NSAM First Grade College (Bengaluru)</b></p>	<p>BBA (General   Aviation Management)   BCom (General   Logistics &amp; Supply Chain Management   Business Data Analytics)   BCA BSc (Honors): Civil Aviation Pilot Training   Civil Aviation Flight Dispatcher</p>
<p><b>Nitte Rukmini Adyanthaya Memorial Polytechnic (Nitte)</b></p>	<p>Diploma in Engineering: Civil   Computer Science   Electrical &amp; Electronics   Electronics &amp; Communication   Mechanical   Apparel Design &amp; Fabrication Technology</p>

[apply.nitte.edu.in](https://apply.nitte.edu.in)





Bring us a spark,

**we will  
ignite your  
potential.**

**The Director (Administration)**  
Nitte (Deemed to be University)  
Medical Sciences Complex, Deralakatte,  
Mangaluru - 575 018, Karnataka, India

Scan to Apply Now



+91 95131 88844 | 81471 07329  
info@nitte.edu.in | www.nitte.edu.in | @ f y t in